

ILFAGGIO

Tipologia 1B



Superficie Lorda: 67.19 mq

Vani Tecnici: 9.56 mq

Superficie Netta: 55.05 mq

Vano Scala Privato: 13.20 mq

Giardino: 3.69 mq

Balconi: 31.60 mq

Terrazzo: 50.90 mq

Assonometria nord



Assonometria sud



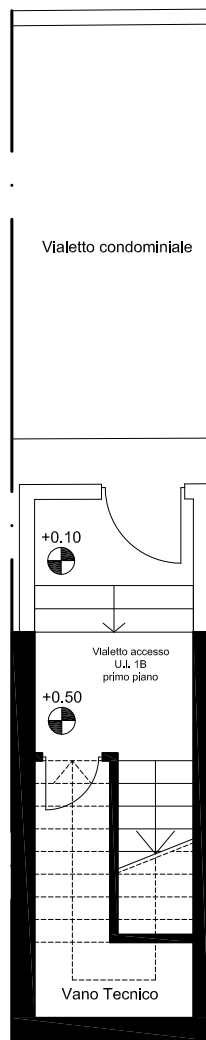
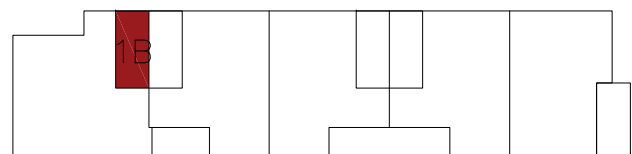
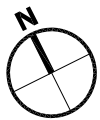
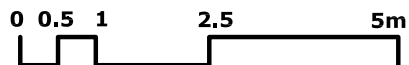


Balcone 1 - 1B

Ingresso 1B



Balcone 2 - 1B

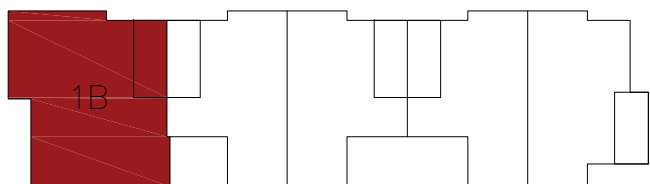
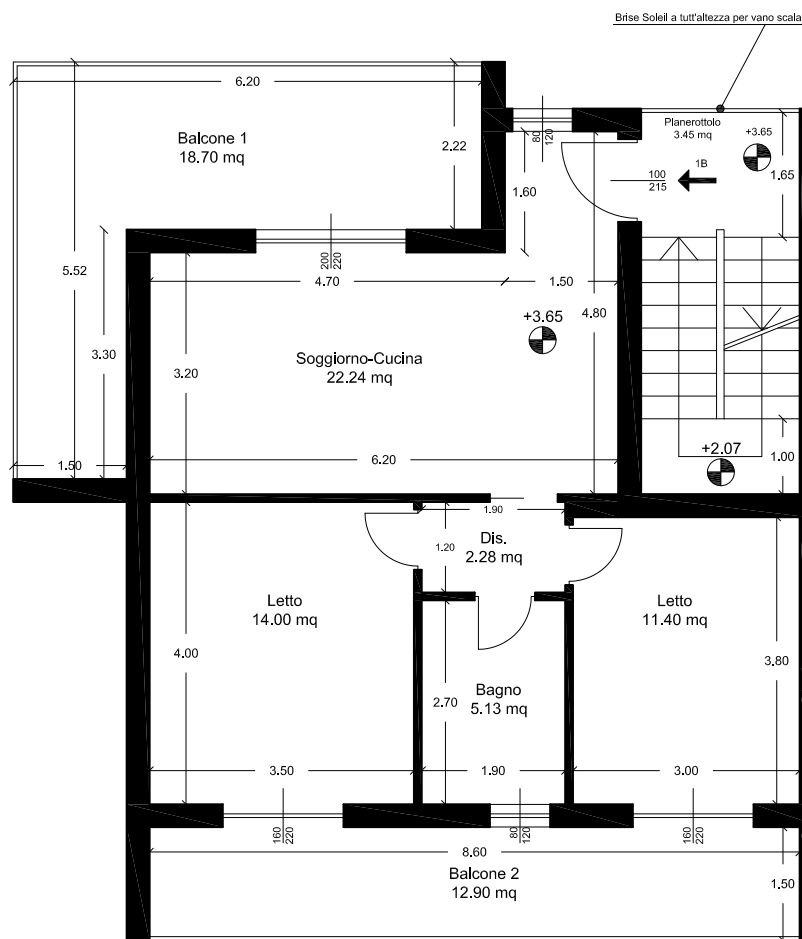
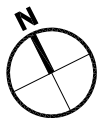
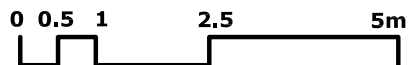


Altra U.I.

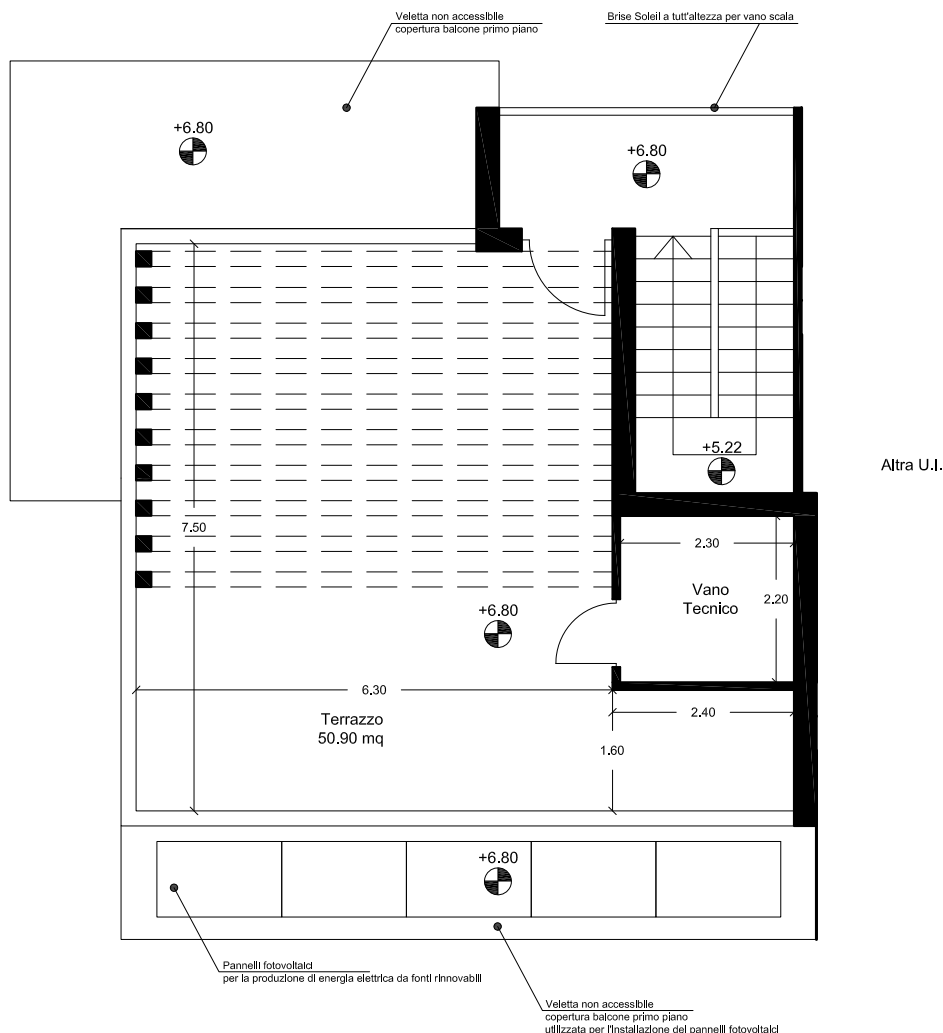
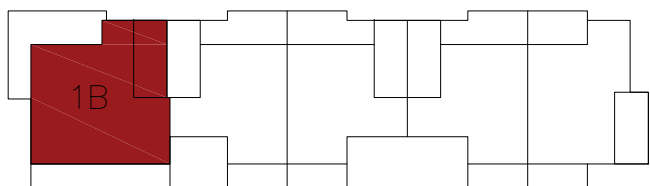
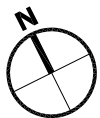
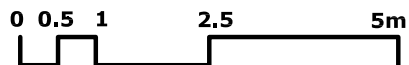
Altra U.I.

Altra U.I.

PLANIMETRIA PIANO TERRA TIPOLOGIA 1B
SCALA 1:100



PLANIMETRIA PIANO PRIMO TIPOLOGIA 1B
 SCALA 1:100



PLANIMETRIA TERRAZZO TIPOLOGIA 1B
 SCALA 1:100



Soluzione 1 B - pianta arredata



Soluzione 1 B - spaccato assonometrico



Soluzione 1 B - zona giorno



Camera matrimoniale



Aree comuni - Parcheggio



Aree comuni - Piscina