

# ILFAGGIO

Tipologia 5B



Superficie lorda: 53.74 mq

Vani Tecnici: 8.43 mq

Superficie Netta: 44.22 mq

Vano Scala Privato: 13.37 mq

Giardino: 3.82 mq

Balconi: 13.01 mq

Terrazzo: 42.52 mq

Assonometria nord



Assonometria sud

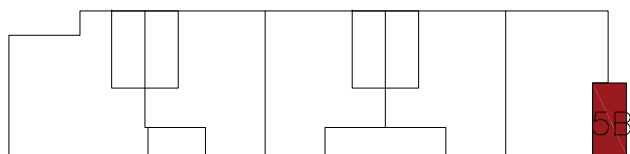
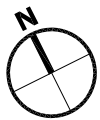
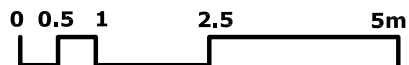


Balcone 1 - 5B

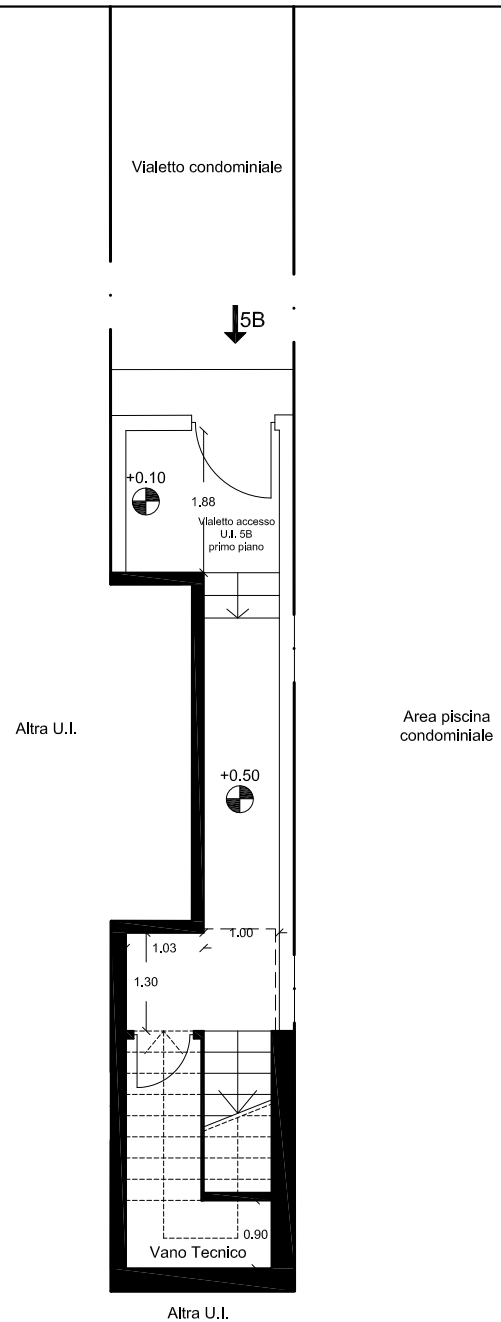
Ingresso 5B

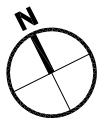
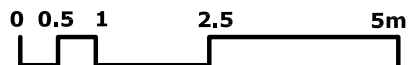


Balcone 2 - 5B

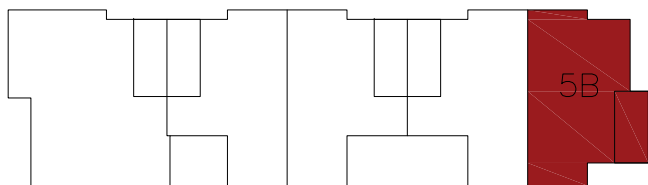
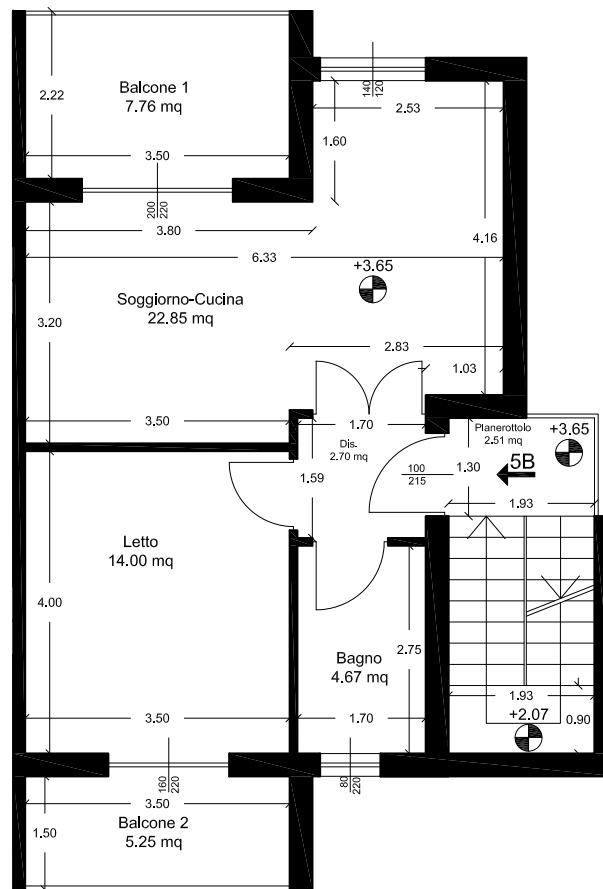


PLANIMETRIA PIANO TERRA TIPOLOGIA 5B  
SCALA 1:100

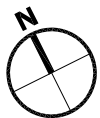
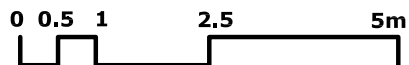




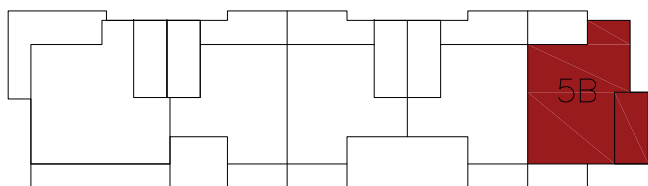
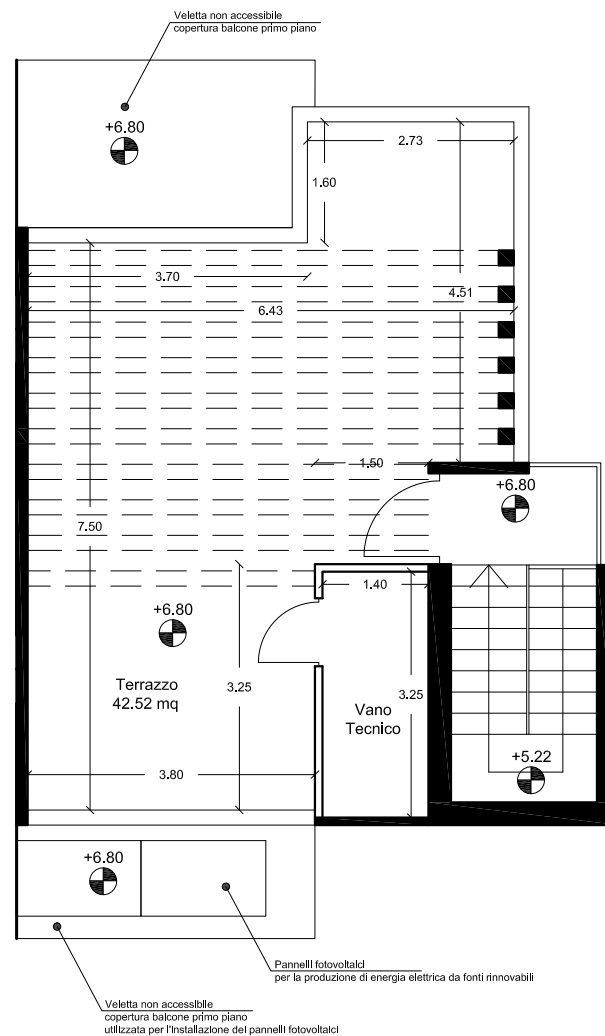
Altra U.I.



PLANIMETRIA PIANO PRIMO TIPOLOGIA 5B  
 SCALA 1:100



Altra U.I.



PLANIMETRIA TERRAZZO TIPOLOGIA 5B  
SCALA 1:100



Soluzione 5B - pianta arredata



Soluzione 5B - spaccato assonometrico





Soluzione 5B - zona giorno



Camera matrimoniale



Aree comuni - Parcheggio



Aree comuni - Piscina